



KUARIO

XPP

Ricoh MFP Kiosk via WIM Installation Manual

Date: March 23, 2026

Version: 1.0

Classification: Technical Manual

All rights reserved. No parts of this work may be reproduced in any form or by any means - graphic, electronic, or mechanical, including photocopying, recording, taping, or information storage and retrieval systems - without the written permission of the publisher.

Products that are referred to in this document may be either trademarks and/or registered trademarks of the respective owners. The publisher and the author make no claim to these trademarks.

While every precaution has been taken in the preparation of this document, the publisher and the author assume no responsibility for errors or omissions, or for damages resulting from the use of information contained in this document or from the use of programs and source code that may accompany it. In no event shall the publisher and the author be liable for any loss of profit or any other commercial damage caused or alleged to have been caused directly or indirectly by this document.

Publisher

KUARIO

Production

KUARIO

Document history

Revision Date	Revision List
23-03-2026	Initial document

Table of contents

Document history	3
What is the KUARIO MFP Kiosk?	4
Obtaining the KUARIO Kiosk application	4
Installation via the WIM (Web Image Monitor).....	5
Step 1.....	5
Step 2.....	5
Step 3.....	5
Step 4.....	6
Step 5.....	6
Step 6.....	6
Step 7.....	7
Change the background image	7
Recommended Timer Settings	8

What is the KUARIO MFP Kiosk?

The KUARIO MFP Kiosk application is an embedded software solution that transforms a Multifunction Printer (MFP) into a simple web shop-style interface. It is designed for public environments such as supermarkets, post offices, and airports, where users need easy access to printing, copying, and scanning services.

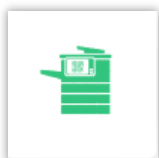
Traditional MFP interfaces are often too complex for public use. The KUARIO MFP Kiosk simplifies this by removing the need for user accounts or advanced print management systems.

The application allows users to print, copy, and scan directly from the MFP. Payments are handled through the KUARIO platform, enabling cashless transactions via the KUARIO smartphone app (Android/iOS). For locations that prefer cash, coins, or contactless payments, a KUARIO payment terminal is also supported, including debit and credit cards.

Obtaining the KUARIO Kiosk application

To obtain the latest version of the KUARIO Kiosk application, please visit the downloads section of the KUARIO website: [KUARIO || Download KUARIO setup files](#)

Here you will find the application download.



KUARIO MFP Kiosk for Ricoh - Vx.x.x

Download the zip file to your computer. Do not unpack the zip! Keep it as is.

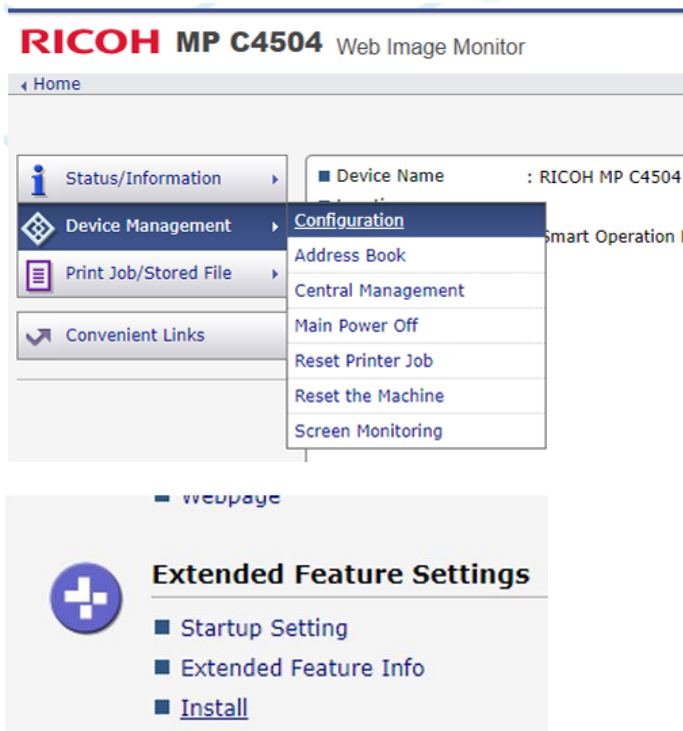
Installation via the WIM (Web Image Monitor)

Step 1

Browse the website of the Ricoh WIM (Web Image Monitor) by entering in the IP-Address or hostname of the MFP.

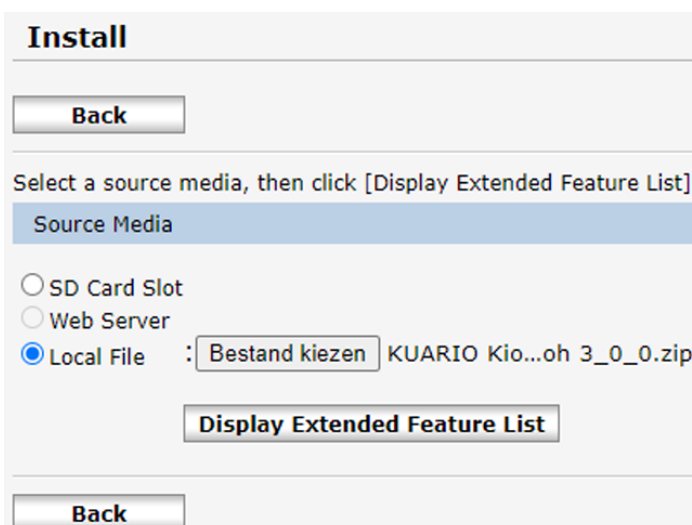
Step 2

Log in as admin and go to: Device Management -> Configuration -> [Extended Feature Settings] Install



Step 3

Select Local File and browse to the downloaded zip from chapter 1.



Step 4

Click '**Display Extended Feature List**'. (it looks like nothing is happening, but it can sometimes take quite some time to load).

Step 5

When step 4 has finished loading, the screen below appears. Select the KUARIO Kiosk application, set '**Auto Start**' to 'On' and click '**Install**'.

The screenshot shows the 'Install' window with the following sections:

- Source Media:** Radio buttons for SD Card Slot, Web Server, and Local File (selected). A text field shows ': Bestand kiezen' and a status message 'Geen bestand gekozen'. A 'Display Extended Feature List' button is present.
- Installation Target Setting:** A dropdown menu for 'Install to' is set to 'Device HDD'.
- Type-J Setting:** Radio buttons for 'Auto Start' are set to 'Off'.
- Extended Feature List:** A table with 1 application listed.

Total Applications:1					
	Extended Feature Name	Type	Description	Version	Source Media
<input checked="" type="radio"/>	KUARIO Kiosk	SOP	KUARIO MFP Kiosk self-service app	3.0.0	Local File

Step 6

Confirm that the application will be installed by clicking **OK**.

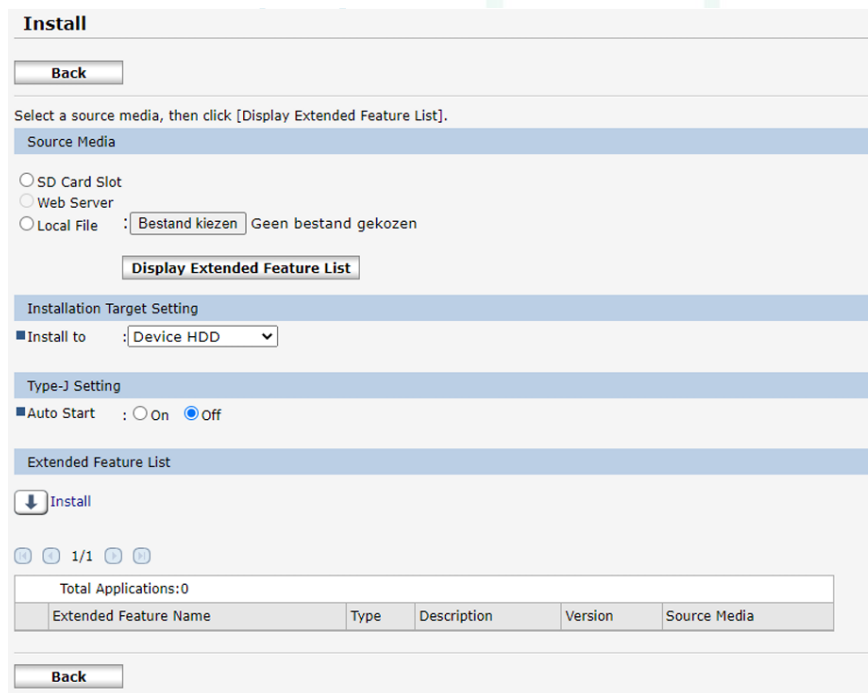
The screenshot shows a confirmation dialog titled 'Install' with an information icon and the text 'Confirm'. It lists the details of the application to be installed:

- Extended Feature Name : KUARIO Kiosk
- Description : KUARIO MFP Kiosk self-service app
- Version : 3.0.0
- Product ID : 1661403149
- Startup Location : ---
- Vendor : KUARIO
- Contact :
 - TEL : +31-252 744 044
 - Fax : +31-252 744 044
 - Email : info@kuario.com

Buttons for 'OK' and 'Cancel' are at the bottom.

Step 7

After installation is completed, the screen will return to the screen below.



Install

Select a source media, then click [Display Extended Feature List].

Source Media

SD Card Slot
 Web Server
 Local File : Geen bestand gekozen

Installation Target Setting

Install to :

Type-J Setting

Auto Start : On Off

Extended Feature List

1/1

Total Applications:0

Extended Feature Name	Type	Description	Version	Source Media
-----------------------	------	-------------	---------	--------------

The installation is now complete.

Change the background image

It is possible to change the background of the KUARIO MFP Kiosk Application.

Log in to the KUARIO Manager (<https://manager.kuorio.com>) and browse to the Outlet Group where the MFP is installed.

Click the three dots to the right of the Outlet and click on 'Edit'.

Click on 'SAVE AND NEXT' until the template section appears. On the bottom, a new image can be uploaded and selected by clicking on 'CHANGE IMAGE'.



Please keep these dimensions for the background image: 1280 x 750 pixels.

Recommended Timer Settings

For optimal performance of the KUARIO MFP Kiosk solution on Ricoh SOP multifunctional printers (MFPs), it is important that the MFP timer settings are properly aligned with those of the KUARIO application.

We recommend configuring the Ricoh MFP timer settings to be more generous than those of the KUARIO MFP Kiosk. This prevents the MFP from logging out earlier than the KUARIO application, which could result in incomplete tasks and a negative user experience.

If the Ricoh MFP logs out before the KUARIO application:

- Ongoing tasks may not be completed correctly.
- This may lead to confusion or frustration for users.
- Refund of payment (via KUARIO App or voucher if paid with cash or debit/credit card)

Recommended Timer Settings

- Ricoh Sleep Mode Timer: ON – 30 minutes
- Ricoh System Auto Reset Timer: ON – 300 seconds
- Ricoh Copier/Document Server Auto Reset Timer: ON – 300 seconds
- Ricoh Scanner Auto Reset Timer: ON – 300 seconds
- Ricoh Printer Auto Reset Timer: ON – 300 seconds
- Ricoh Auto Logout Timer: ON – 300 seconds
- KUARIO Session Timeout: 240 seconds

Ensure that Ricoh timers are always set at least 1 minute longer than the KUARIO timers. Also make sure that the system time in the Ricoh MFP is set correctly.

